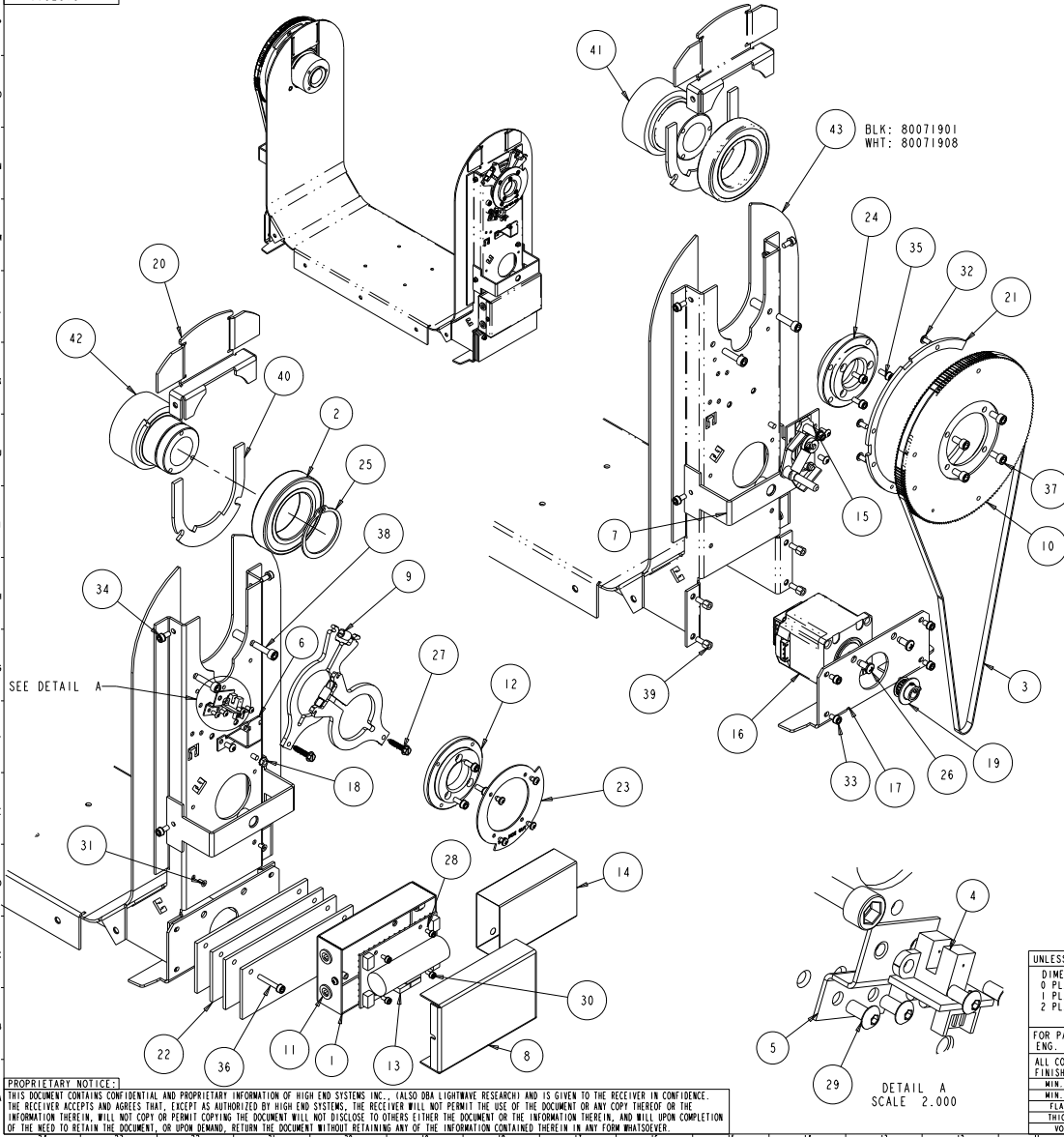


# FOR SERVICE REFERENCE ONLY



BLK: 80071901  
WHT: 80071908

ITEM NO.	QTY.	FILENAME	PART NO.	DESCRIPTION
43	1	TWA093	CHARTED	YOKE, WELDED ASSY PAINTED SG
42	1	TW381	99140021	TUBE, TILT W/ RETAINING GROOVE
41	1	CAT327	99140018	TUBE, TILT CATALYST HEAD, DLI
40	2	TW517	80070464	STOP, TILT TUBE SG
39	4	STANDOFF_M4X6_M-F	90702376	STANDOFF, 6MM X 6MM L M/F M4 ALUM
38	4	SCREWM5AC20SSP	91100520	SCREW, M5 SOCKET CAP 20 SS W/PATCH
37	4	SCREWM5AC10SSP	91100510	SCREW, M5 SOCKET CAP 10 SS W/PATCH
36	2	SCREWM4AC25W-BZ	91000425	SCREW, M4 SOCKET CAP 25 BZ SEMS
35	6	SCREWM4AC10W-BZ	91000410	SCREW, M4 SOCKET CAP 10 BZ SEMS
34	8	SCREWM4AC08BZ	91000408	SCREW, M4 SOCKET CAP 08 BZ SEMS
33	4	SCREWM4AC06W-BZ	91000406	SCREW, M4 SOCKET CAP 06 BZ SEMS
32	8	SCREWM4A0808BZP	91010408	SCREW, M4 BUTTON 08 BZ W/PATCH
31	2	SCREWM3AF06BZP	91040306	SCREW, M3 SOCKET CSNCK FLAT 06 BZ W/PATCH
30	4	SCREWM3AC06W-BZ	91000306	SCREW, M3 SOCKET CAP 06 BZ SEMS
29	4	SCREWM3A0606BZP	91010306	SCREW, M3 BUTTON SOCKET HD 06 BZ W/PATCH
28	6	SCREW6-19PP250TL-SZ	90709123	SCREW, 6-19 PHIL PAN 1/4 SZ PLASTITE
27	2	SCREW8-18SH875ABTYPE-SS	90704040	SCREW, #8 HEX HEAD 7/8 SHEET METAL SS
26	2	SCREW10-14PP500TL-SZ	90709062	SCREW, #10 PHIL PAN 1/2 PLASTITE SZ
25	1	RING-RETAINING_175_SHAFT	90701375	RING, RETAINING, EXTERNAL, 1.618
24	1	CAT328	99360041	PULLEY, ADAPTOR, TILT, DLI
23	1	TW519	99080311	PLATE, TILT SENSOR SG
22	4	TW542	80070473	PLATE, COUNTERWEIGHT, OKE SG
21	1	DE131	99080350	PLATE, TILT STOP V3
20	2	CAT181	80071806	PLATE, TILT BEARING RETAINER BLK DLI
19	1	TW335	99430126	PINION ASSY 17T 3MM HTD, LOW PROFILE
18	1	NUTM4KEP	91201204	NUT, M4 KEPS
17	2	TW526	99260504	MOUNT, TILT MOTOR, SG
16	1	TW502	INTERNAL	MOTOR, ENCODER ASSEMBLY SB/SG
15	1	CATA031	NA	LATCH, ASSY, TILT, DL
14	1	TW208_FORMED	90411075	INSULATOR, IGNITOR MEAI
13	1	TW426	90606007EF	IGNITOR, POWER SUPPLY, 2KW, CC1, A1
12	1	TW380	99400097	HUB, TILT SENSOR SG
11	4	BUSHING3121DSNAP	90410157	GROMMET, SNAP BUSHING .312 ID
10	1	DE132	99430131	GEAR, PULLEY, 17OT TILT/PAN DRIVE V2
9	2	FSA0089	80360009	DAMPENER, BRAKE ASSY PAN X-SPOT/SG
8	1	TW146	99080309	COVER, IGNITOR BRACKET SG
7	2	CAT186	99260424	BRACKET, YOKE ARM COVER RETAINER DL
6	1	CAT198	99263113	BRACKET, WIRE GUIDE, RIGHT, DL
5	1	TW529	99260506	BRACKET, TILT SENSOR, SG
4	1	FS709	80040022EF	BOARD, ASSY X-SPOT FLAG HOMING SENSOR
3	1	TW503_TENSIONED	99360049	BELT, TIMING 3MM HTD, 305 GROOVE, 6MM
2	2	BEARING_45-75MM_BALL	90719061	BEARING, 45MM, 6009 2RS
1	1	TW147	99080310	BASE, IGNITOR BRACKET SG

BILL OF MATERIALS

UNLESS OTHERWISE SPECIFIED: DIMENSIONAL TOLERANCES: 0 PLACE DECIMAL = ±0.38 1 PLACE DECIMAL = ±0.25 2 PLACE DECIMALS = ±0.13 ANGLES = ±0.5°	RELEASE DATE: CE: OA: ME: MFG: DESCRIPTION: YOKE, SUB-ASSY SG 2.5	High End 2105 GRACY FARMS LANE AUSTIN, TEXAS 78758 (512) 836-2242 FAX (512) 832-4128 http://www.highend.com	Lightwave RESEARCH
FOR PAINTED PARTS REFER TO ENG. SPEC. MANUAL WI-0582 ALL COMPONENTS, MATERIALS AND FINISHES TO BE R&HS COMPLIANT	MATERIAL: CHARTED	FINISH: NA	
MIN. DRAFT MIN. RADIUS FLATNESS THICKNESS VOLUME	INTERPRET DIMENSIONS PER ASME Y14.5M-1994 THIRD ANGLE PROJECTION DIMENSIONS ARE IN MILLIMETERS	SI METRIC A1	PART NO. INTERNAL DRAWING NO. TTA003_SVC REV. NA
	DO NOT SCALE	SCALE: 0.143	SHEET: 1 OF 1

**PROPRIETARY NOTICE:**  
THIS DOCUMENT CONTAINS CONFIDENTIAL AND PROPRIETARY INFORMATION OF HIGH END SYSTEMS INC., (ALSO DBA LIGHTWAVE RESEARCH) AND IS GIVEN TO THE RECEIVER IN CONFIDENCE. THE RECEIVER ACCEPTS AND AGREES THAT, EXCEPT AS AUTHORIZED BY HIGH END SYSTEMS, THE RECEIVER WILL NOT PERMIT THE USE OF THE DOCUMENT OR ANY COPY THEREOF OR THE INFORMATION THEREIN, WILL NOT COPY OR PERMIT COPYING THE DOCUMENT OR THE INFORMATION THEREIN, AND WILL UPON COMPLETION OF THE NEED TO RETURN THE DOCUMENT, OR UPON DEMAND, RETURN THE DOCUMENT WITHOUT RETAINING ANY OF THE INFORMATION CONTAINED THEREIN IN ANY FORM WHATSOEVER.